



Autopilot Servo Installation Guide

Sonex/Waiex-Pitch

This product is not approved for installation in type certificated aircraft

Document 101865-000, Revision A

August, 2012

Copyright © 2009-2013 by Dynon Avionics, Inc.

Permission to print this this manual is granted to third parties



Contact Information

Dynon Avionics, Inc.
19825 141st Place NE
Woodinville, WA 98072
Phone: (425) 402-0433 - 8:00 AM – 5:00 PM (Pacific Time) Monday – Friday
Dynon Technical Support available 7:00 AM–4:00 PM (Pacific Time) Monday – Friday
Email: support@dynonavionics.com
Fax: (425) 984-1751

Dynon Avionics offers online sales, extensive support, and frequently updated information on its products via its Internet sites:

www.dynonavionics.com –Dynon Avionics primary web site; including:
docs.dynonavionics.com – Current and archival documentation including Installation Guides.
downloads.dynonavionics.com – Software downloads.
support.dynonavionics.com – Support resources.
store.dynonavionics.com – Dynon’s *secure* online store for purchasing all Dynon products 24 hours a day.
wiki.dynonavionics.com – Dynon’s Documentation Wiki provides enhanced, extended, frequently updated online documentation contributed by Dynon employees and customers.
forum.dynonavionics.com – Dynon’s Internet forum where Dynon customers can interact with each other and Dynon Avionics. A key feature of the forum is that it allows the exchange of diagrams, photos, and other types of files.
newsletter.dynonavionics.com – Dynon’s email newsletter.
blog.dynonavionics.com – Dynon’s blog where you can find new and interesting Dynon-related content.
register.dynonavionics.com – Register your Dynon Avionics product.
license.dynonavionics.com – Redeem certificates for navigation mapping software, synthetic vision, and other features for license codes that add new functionality to your SkyView system.

Copyright

©2008-2012 Dynon Avionics, Inc. All rights reserved. No part of this manual may be reproduced, copied, transmitted, disseminated or stored in any storage medium, for any purpose without the express written permission of Dynon Avionics. Dynon Avionics hereby grants permission to download a single copy of this manual and of any revision to this manual onto a hard drive or other electronic storage medium to be viewed for personal use, provided that such electronic or printed copy of this manual or revision must contain the complete text of this copyright notice and provided further that any unauthorized commercial distribution of this manual or any revision hereto is strictly prohibited.

Information in this document is subject to change without notice. Dynon Avionics reserves the right to change or improve its products and to make changes in the content without obligation to notify any person or organization of such changes. Visit the Dynon Avionics website (www.dynonavionics.com) for current updates and supplemental information concerning the use and operation of this and other Dynon Avionics products.

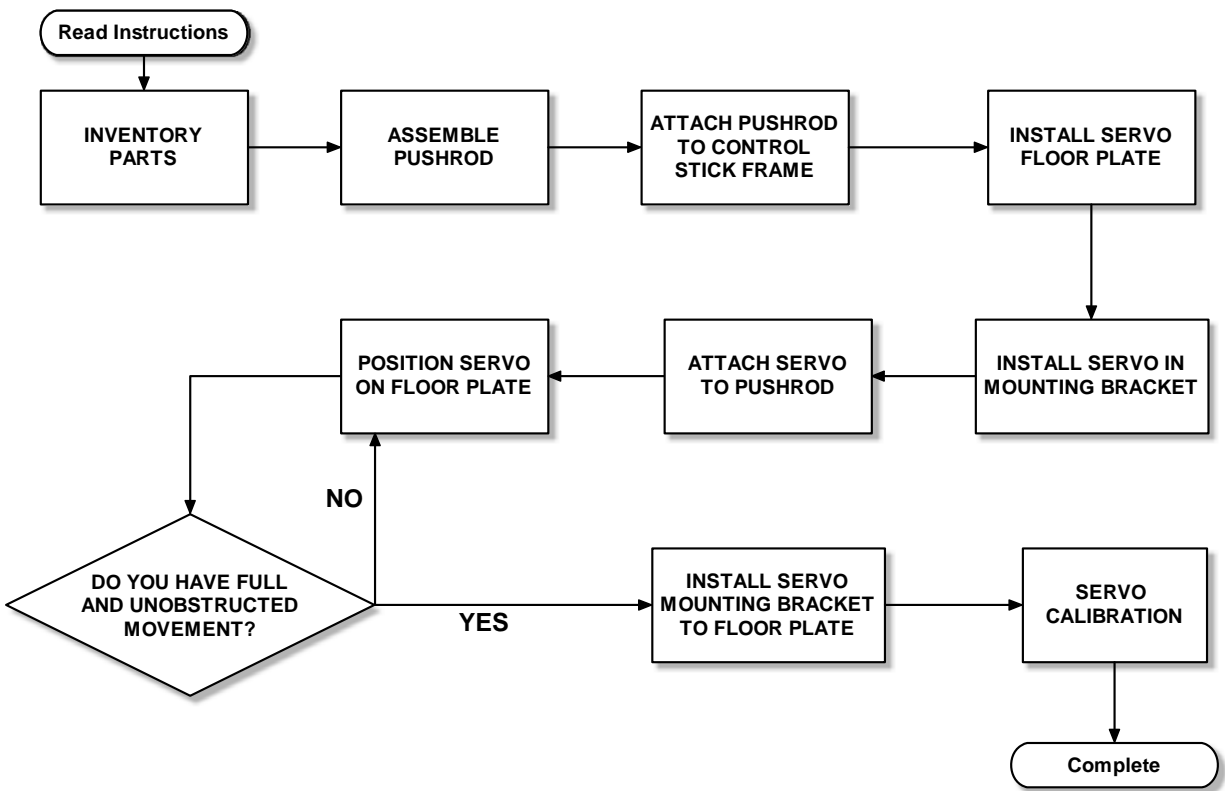
**SERVO MOUNTING INSTRUCTIONS – SONEX/WAIEX PITCH KIT**

Kit Contents		
Dynon Part #	QTY	Part Description
100866-000	1	Servo Mounting bracket
100836-000	1	Male Rod End 3/16" ID
100966-002	1	Tube Aluminum Pushrod - 4.0"
100975-002	2	AN315-4R Jam Nut
100976-007	4	AN365-832A Nylon Insert Locknut
100976-011	1	AN365-1032A Nylon Insert Locknut
100977-000	6	AN970-3 Large Flat Washer
100978-002	4	AN960-8 Small Flat Washer #8
100978-003	6	AN960-10 Small Flat Washer
100978-004	2	AN960-416 1/4" Flat Washer
100979-002	4	MS35333-39 #10 Internal Star Washer
100981-000	4	AN3H-3A Bolt - 3/8"
100981-005	1	AN3H-10A Bolt - 1"
101197-022	1	Bolt Hex #1/4-28 3-5/32" AN4-31A
101443-000	1	Male Rod End 1/4" ID
101612-000	1	Pitch Servo Floor Plate
101843-000	1	AN364-428A Nylon Insert Locknut
101877-000	7	Cherry N Rivets - CCP-42
101880-000	4	Screw Washer Head AN525-832R8

SERVO INSTALLATION AND CONFIGURATION

The Sonex/Waiex pitch servo mounting kit includes a servo mounting bracket, fuselage floor doubler, connecting hardware, and push rod required to complete the installation of the Dynon pitch servo into a dual control Sonex/Waiex aircraft. All Dynon-supplied parts are shaded in the installation illustration (Fig 1) to distinguish them from existing aircraft hardware and structure. If the builder is attempting to install the servo in an aircraft configuration other than that shown, modifications to the kit may be required.

SUGGESTED INSTALLATION PROCEDURE





All AN bolts supplied by Dynon have drilled heads for use with safety wire. With the servo in place, torque all fasteners to installation specifications and add safety wire where needed.

To prevent the possibility of the servo arm going over-center, the servo arm must **not** travel more than a total of +/-60° from neutral throughout the control system's range of travel. Most installations use the outer most hole on the servo arm, due to variations in mounting plate and servo bracket installation locations, each install varies. The linkage should be installed such that adequate force is applied to the control stick frame with the pushrod perpendicular to both the servo and the control stick frame. Changing the location of the pushrod mounting on the servo arm will affect servo torque output, servo arm travel, control surface resolution, and the amount of force required to shear the safety screw, the installer should have an understanding of these implications. See Fig 2 which illustrates the linear travel and available force for each mount point on standard-arm servos.

The distance between the servo arm and the control system attachment point must allow for the angle between the servo arm and the push rod to be at approximately 90° when the controls are at neutral. Use the adjustability in the rod ends to achieve this, and then tighten the jam nuts to lock the rod ends in place. Installers should always keep in mind the range of motion of the servo. Total servo arm travel is limited, but verify the arm/linkage do not interfere with anything during the full motion of the control stick. The built in control stops of the aircraft will limit the servo arm travel when installed correctly. We recommend the use of the optional Range of Motion Limiting Bracket, supplied with the servo to eliminate the chance of the servo arm going over-center. This bracket should not be used as a normal stop; the aircraft's built-in stops should always be the primary range limit.

For the latest documentation on all Dynon products go to dynonavionics.com. Please read through that documentation to understand the wiring and configuration process for your Autopilot system. We also maintain a collaborative set of this documentation, which is often updated with new information by both Dynon and fellow builders. Visit wiki.dynonavionics.com to view and contribute to the latest version of these documents.

You can also visit forum.dynonavionics.com to discuss and share installation notes, pictures, and suggestions with other builders.



Neglecting to properly install and/or use Dynon autopilot hardware may result in failures which could cause loss of aircraft control resulting in aircraft damage, personal injury or death.



Item	Description	Qty
1	Servo Mounting Bracket	1
2	Pitch Servo Floor Plate	1
3	Male Rod End 3/16" ID	1
4	Male Rod End 1/4" ID	1
5	Tube Aluminum Pushrod - 4"	1

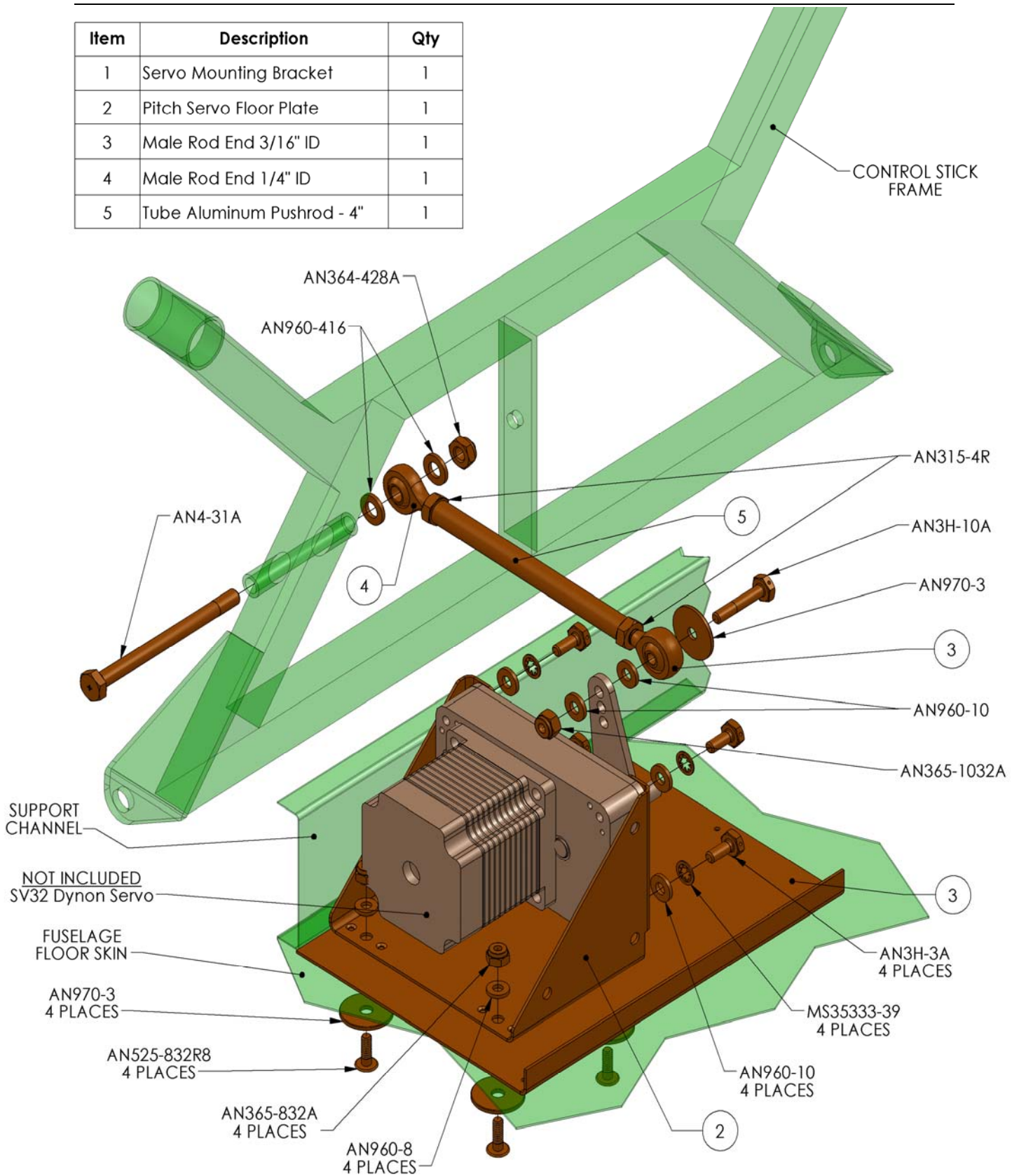


Fig 1

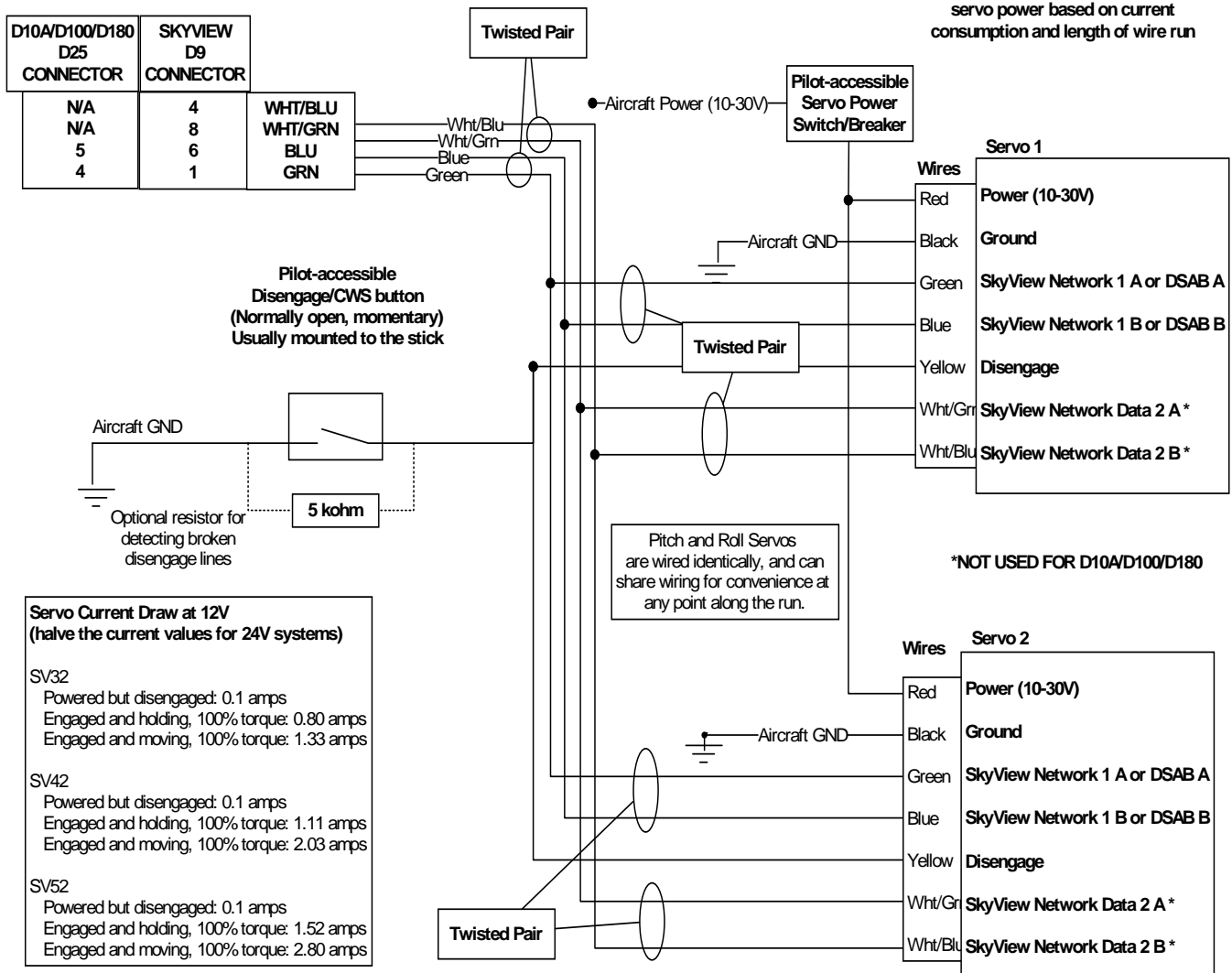


Wiring Overview

The following diagram provides an overview of the autopilot-specific wiring installation. For the complete set of wiring and configuration instructions, please see the latest Installation Guide for your Dynon EFIS product. For a SkyView system please reference the **Autopilot Servo Installation, Configuration, and Calibration** chapter of your SkyView System Installation guide. For EFIS-D10A, EFIS-D100 or FlightDEK-D180 please reference the **Autopilot Installation and Configuration** chapter of each respective Installation Guide.

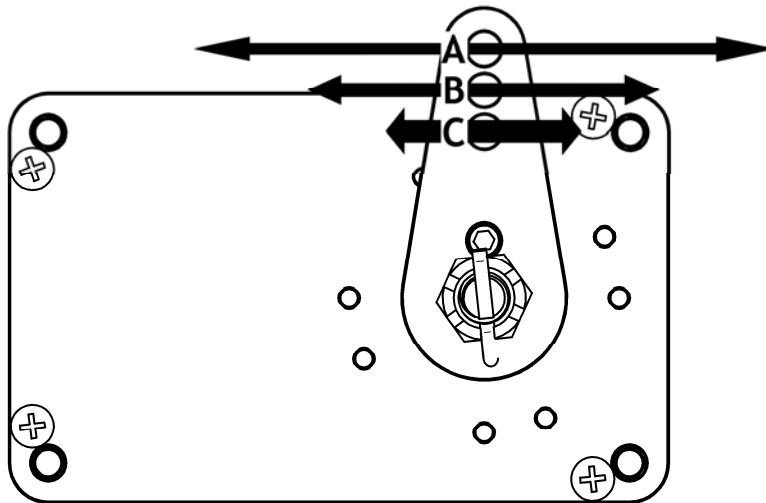
Use 22 AWG wire for SkyNet and Disengage signals.

Use appropriate wire gauge for servo power based on current consumption and length of wire run



Linkage mount position force and travel

The diagram below illustrates the maximum travel and force available at each linkage mounting point. As can be seen, the closer you mount the linkage to the shaft, the more force the servo can deliver. However, this also means the travel of the arm is shorter. Again, ensure that the servo arm is nowhere near going over-center throughout the entire range of the control system. Modify mount position with caution and take all precautions to ensure that a near over center condition cannot occur.



Standard Arm

Max Linear Travel

A: 2.6", B: 2.2", C: 1.8"

Max Force @ 100% Torque

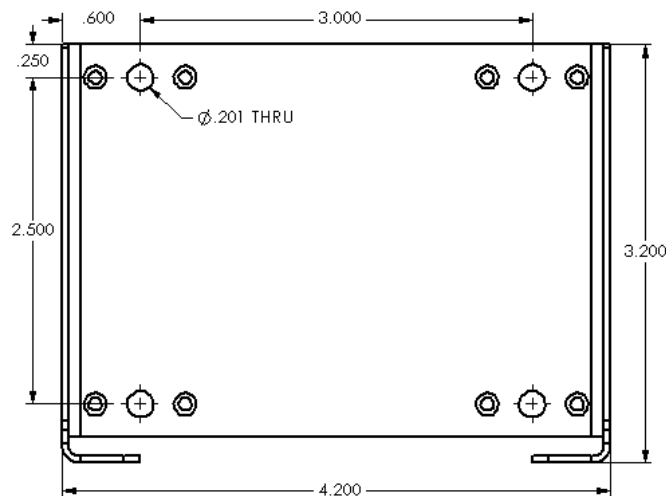
SV32 - A: 24lb, B: 29lb, C: 36lb

SV32-Weight 2lb

SV42-Weight 3lb

SV52-Weight 4lb

SERVO MOUNTING BRACKET DETAIL





- ! The autopilot safety shear screw should **NEVER** be removed or adjusted during this operation. If the shear screw has broken and needs replacement, there is specific documentation available for this purpose at <http://docs.dynonavionics.com>.

