

ADVANCED™

FLIGHT SYSTEMS



AVIONICS CATALOG

ADVANCEDPANEL AND AF-5000 SERIES FOR
EXPERIMENTAL AND LIGHT SPORT AIRCRAFT



Started in 1999, Advanced Flight Systems is a classic family entrepreneurial story. An electrical engineer with software expertise, founder/owner Rob Hickman created an engine monitor for the RV-4 he was building. Other local builders expressed interest, and a company was born. After almost two decades of innovation, Advanced Flight Systems is now part of the Dynon family of companies. For his contributions to the industry through Advanced Flight Systems, Rob Hickman was inducted into the EAA Homebuilders Hall of Fame in 2017.

Today, Advanced Flight Systems is the premier, concierge-class provider of avionics solutions for your experimental aircraft. We're the only panel-crafter that makes almost everything ourselves, including the avionics, software, panel, harnesses, and even the power and wiring distribution system. When you choose Advanced, you benefit from over 20 years of innovations that propelled us from our beginnings as a family business to the trusted company we are today. Let our expert pilots, advisors, and support staff help you every step of the way as we design and build an **ADVANCEDPANEL** that is worthy of your aircraft.

At Advanced, We Go Beyond



TABLE OF CONTENTS

ADVANCEDPANEL

Advanced Panel Process	3-4
Advanced Panel System	5
Advanced Panel VFR and IFR Options	6
Advanced Panel VFR Examples.....	7
Advanced Panel IFR Examples	8

ADVANCED SYSTEM

Advanced Features.....	9-10
AF-5600 Display	11
AF-5800 Display	11
AF-5700 Display	12
AF-5500 Display	12
AF-5400 Display	12

SYSTEM COMPONENTS

Components.....	13-16
-----------------	-------

SYSTEM WORKSHEET

Primary Flight Displays and Navigation.....	17
AOA/Pitot Probes.....	17
Engine Monitoring.....	18
Autopilot	18
Transponders, ADS-B In/Out, Traffic and Weather.....	18
Radios, Intercom and Audio.....	18

PANEL PLANNER (ACTUAL SIZE CUT OUTS)

AF-5600 10.4" Display	19
Control Panels (Horizontal).....	20
Control Panels (Vertical).....	21
AF-5500 8.4" Display	22

ADVANCEDPANEL™



THE PROCESS

Think about your aircraft's mission.

Are you equipping for VFR or IFR? If you want to plan a panel with a future upgrade in mind - we can do that. This usually means a VFR panel with a cutout for a future IFR navigator, or maybe a panel with a single-screen EFIS with the plan to add a second screen. We can build your **ADVANCEDPANEL** with this in mind.

Think about whether you prefer Advanced AF-5000 or Dynon SkyView HDX.

Both systems are from our Dynon family of products and use the same "behind-the-scenes" components. If you're not sure which system to go with, we can help you decide.

Work with our experts to customize and design your panel.

If you need some inspiration, browse our site for examples of **ADVANCEDPANEL** installations in your aircraft type. We have already built **ADVANCEDPANELS** for RV-7, RV-8, RV-9, RV-10, RV-14, Glasair Sportsman, CubCrafters, Kitfox, RANS, and Sonex aircraft. If you fly something else, give us a call. We can likely develop an **ADVANCEDPANEL** for YOUR airplane. We'll send you a quote listing all the parts (with detailed pricing) that will be included in your **ADVANCEDPANEL**.



IFR VAN'S AIRCRAFT RV-10 AEROSPORT From \$44,500

Sit back and relax while we engineer, craft, and configure your panel.

Once you have approved the design, your panel is laser-cut, powder coated and labeled. This process can take several weeks, during which we are building your harnesses and assembling, testing and calibrating your panel components. We also send you the components that you will need to install (engine sensors, autopilot servos, ADAHRS, etc) so that you can be ready when your **ADVANCEDPANEL** arrives. We're sure you have other things to finish on your airplane. So, let us save you hundreds of hours in wiring, configuration, and frustration.

Install your **ADVANCEDPANEL**.

Your **ADVANCEDPANEL** will arrive carefully packaged, along with any other components that were part of your order, ready to install in your aircraft. With it will be a detailed packing list showing each part, by part number (and serial number, when applicable), to make taking an inventory of your shipment easy. Each **ADVANCEDPANEL** comes with a packet of drawings, including wiring diagrams. Our **ADVANCEDPANEL** manual has step-by-step instructions for installing the components, connecting your aircraft systems (lights, boost pump, flaps, etc) and testing the system. Connect to power, pitot static, autopilot servos, and any other systems in your aircraft and you're ready to...

Go Fly... and send us some pictures!

✉ info@advanced-flight-systems.com

☎ (503) 263-0037

ADVANCED
FLIGHT SYSTEMS

ADVANCEDPANEL™

YOUR AIRCRAFT EVOLVED

As an aircraft homebuilder, are you worried about wiring today's increasingly complex systems? The **ADVANCEDPANEL** process lets you entrust this important aspect of your aircraft to the people that know aircraft systems best. You can focus on your perfect panel design while we handle the heavy lifting. We take the entire process of building your avionics, electrical system, and other aircraft systems and simplify them into a unique guided process. It starts with our expert, bespoke design services and ends with a drop-in integrated system that cuts hundreds of hours off your project.

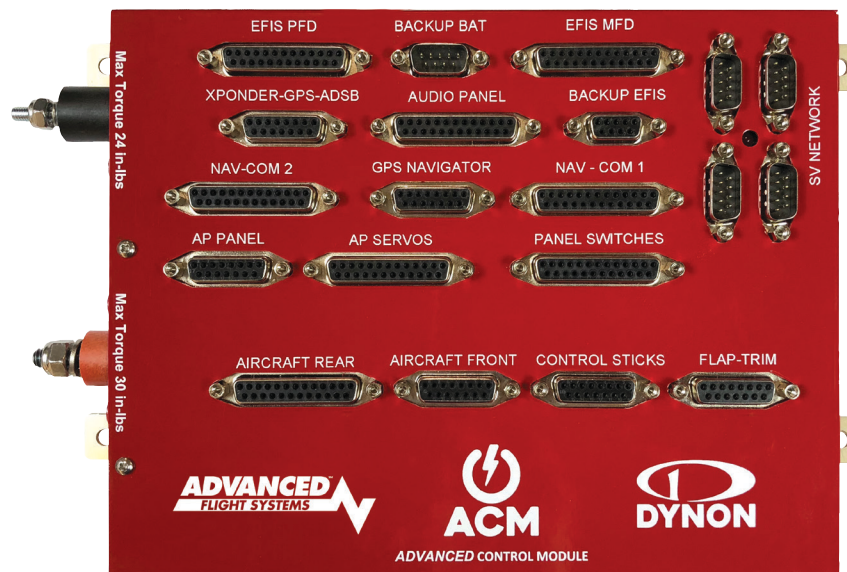
While you spend your time completing your aircraft's construction and worrying about your paint scheme, **ADVANCED** takes the panel design we collaborate on and brings it to life. You receive a ready-to-install **ADVANCEDPANEL**, complete with pre-configured, pre-wired avionics already installed.

After following the simple instructions to mate your **ADVANCEDPANEL** to your aircraft, you're done. Want to fly sooner? Give us a call.

ADVANCED CONTROL MODULE

At the heart of every **ADVANCEDPANEL** is the groundbreaking Advanced Control Module. It's the first and only comprehensive smart power and distribution center for your aircraft's electrical system, avionics, headsets, aircraft lights, autopilot servos, trim servos, flap motor, control sticks, and panel switches. All of these connect to the ACM with customized harnesses we provide, allowing a "plug and play" installation, and saving you hundreds of hours of wiring, crimping, troubleshooting and frustration. The ACM provides no-mistake wiring, easy diagnostics, and a much easier upgrade process should you decide to opt for that next-gen upgrade several years down the road.

The ACM-ECB (Electronic Circuit Breaker) offers EFIS-based monitoring and control of your aircraft's electrical system.



- 27 Channels of Circuit Protection (ECB version)
- Built-in ARINC module for IFR Navigator connectivity
- Multi-Step Flap Positioning System
- Wig-Wag Lighting Circuit, with automated airspeed-sensitive control
- Panel Dimmer
- Trim Controller (must have SV-AP-PANEL)
- SkyView Network Hub (4 Port + AP Servos)
- Panel Switch Interface with support for dimmable in-switch lights
- Control Stick Interface



VFR VAN'S AIRCRAFT RV-7/9
 With SkyView HDX
 From \$22,950

VFR ADVANCEDPANEL Include:

- Touchscreen PFD
- Touchscreen MFD
- ADAHRS
- COM Radio
- WAAS GPS
- Mode-S Transponder
- ADS-B Traffic and Weather
- 2020-Compliant ADS-B Out
- Two-Place Stereo Intercom
- Autopilot Control Module
- AOA On-Screen Display
- Engine Monitor Module
- Advanced Control Module with Electronic Circuit Breakers
- Switches and Audio Jacks
- Powder Coated and labeled Instrument Panel
- Wi-Fi Module to enable iPad Connectivity



IFR VAN'S AIRCRAFT RV-10
 With AF-5000
 From \$37,830

IFR ADVANCEDPANEL Include:

- Touchscreen PFD
- Touchscreen MFD
- ADAHRS
- COM Radio
- WAAS GPS
- Mode-S Transponder
- 2020-Compliant ADS-B Out
- ADS-B Traffic and Weather
- Advanced Control Module with Electronic Circuit Breakers
- AOA On-Screen Display
- Engine Monitor Module
- Advanced Control Module
- Switches and Audio Jacks
- Powder Coated and labeled Instrument Panel
- Wi-Fi Module to enable iPad Connectivity
- Avidyne IFD Series GPS Navigator - Touchscreen FMS/GPS/NAV/COM
- Independent Backup EFIS
- PS Engineering Audio Panel - Remote audio panel with Bluetooth and Dimensional sound for AFS panels

ADVANCED PANEL

VFR AF-5600 CARBON CUB

From \$17,540



VFR AF-5600 RANS AIRCRAFT S-21

From \$23,800



VFR SKYVIEW SONEX AIRCRAFT B-MODELS

From \$17,900



IFR AF-5600 GLASAIR SPORTSMAN

From \$40,080



IFR AF-5600 VAN'S AIRCRAFT RV-8

From \$34,730



IFR SKYVIEW VAN'S AIRCRAFT RV-14

From \$37,150



ADVANCED FEATURES



Weight & Balance: Instantly calculate your CG and load with our Weight and Balance page.

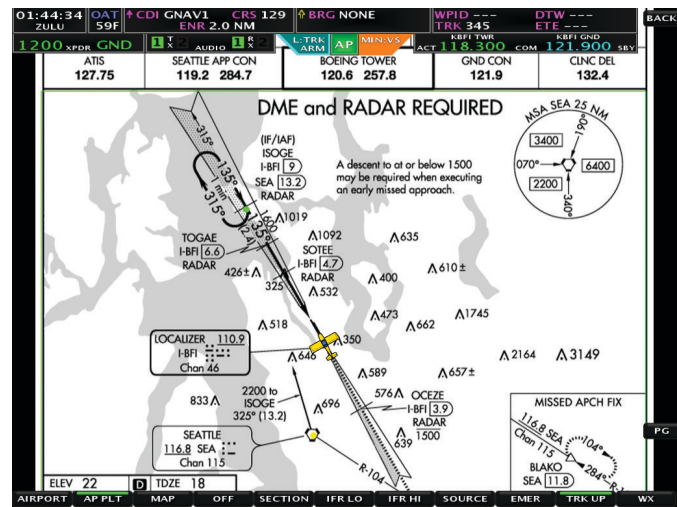


Analog Instruments: Standard analog 6-pack instrument display, including - analog HSI.



Airport/Airspace Information: Complete airport information; including - runways, frequencies, METAR's, TAF's and pattern altitudes.

Airspace Information: Selectable airspace information; including - highlight current boundaries and display the vertical limits. Lets you easily select and display overlapping complicated airspaces, reducing pilot workload.



Approach Plates, VFR Sectionals & IFR Charts: Geo-Referenced Approach Plates, Sectionals and IFR Low Charts display your aircraft's current location, as well as traffic. Updated every 28 days, display in full-screen or split-screen mode.



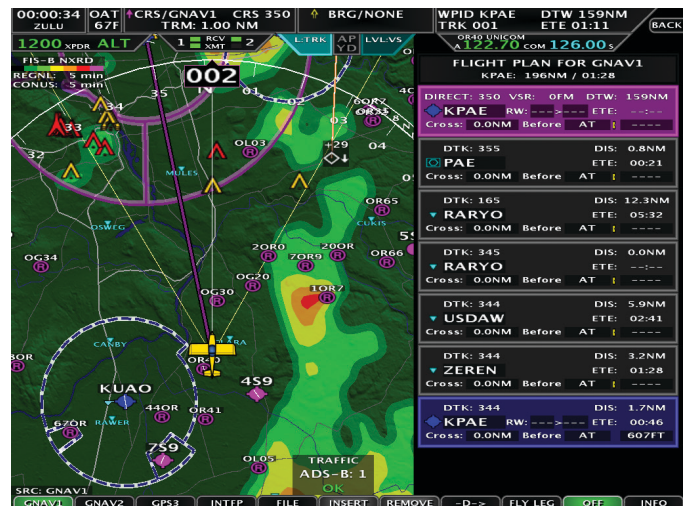
EMERGENCY Glide: Calculates and displays airports that are within your aircraft's engine-out glide range.



GPS and ILS Display: CDI and VDI displayed from external GPS navigator or Nav radio.



Aircraft Maintenance Logs: Keeps track and alerts you when it's time for Oil Changes, Annual Inspections, ELT Batteries, Filters, Brakes or any other user configurable item.



Flight Planning: Loads multi-leg flight plan from an external GPS navigator or allows user input from EFIS Screen.

ADVANCED DISPLAYS

The AF-5000 series is the flagship EFIS system from Advanced Flight System. It is available as part of our **ADVANCEDPANEL** offering, but can also be purchased separately to build into your own panel.

All AF-5000 EFIS models utilize a high-quality, sunlight readable high-resolution touchscreen LCD display. All displays feature five RS-232 serial ports, two USB ports, SD card, Ethernet and the Advanced-SV Network connection for superb connectivity to Advanced, Dynon, and many third-party devices.

10.4" AF-5600 DISPLAY



The 4:3 aspect ratio touchscreen display gives you a wide and tall picture that affords exceptional situational awareness. Additional buttons and knobs along the right side of the display dynamically reconfigure to the task at hand, freeing you up from hunting for features deep in menus. Connect multiple screens together and you can display any combination of EFIS, Engine Monitor, and Map across your screens.

Weight: 5 lb. (2.27 kg)
Power : 2.8A @12V DC

PART#	NOTES	PRICE
AF-5600T	10.4" Touch Screen	\$4490

12.1" AF-5800 DISPLAY

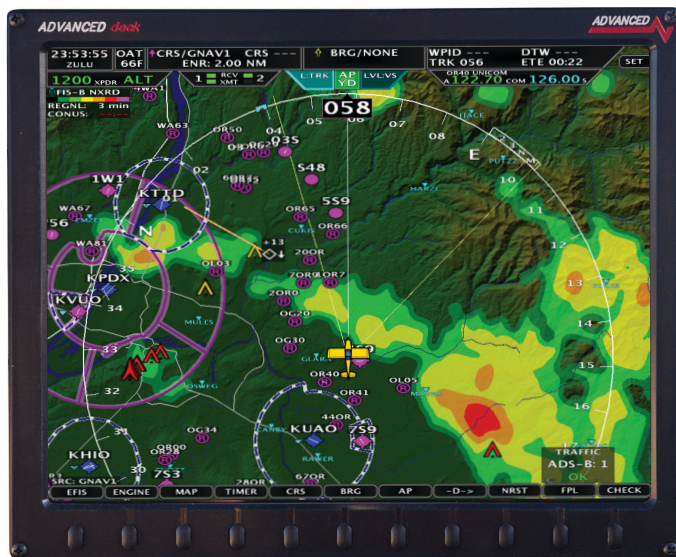


A large, 12.1" touchscreen display with the same full complement of knobs, buttons, and joysticks as the 10" AF-5600. It won't fit in every aircraft, but if your panel supports it, the AF-5800 is an expansive window of situational awareness.

Weight: 5.4 lb. (2.45 kg)
Power : 2.8A @12V DC

PART#	NOTES	PRICE
AF-5800T	12.1" Touch Screen	\$5200

12.1" AF-5700 DISPLAY



The AF-5700 touchscreen display - featuring an updated ADVANCED Touch interface - is the smallest form factor 12" class EFIS available. The display combines the largest-in-class 12.1" screen with a minimized installation footprint, affording pilots the opportunity to install a large screen EFIS in an instrument panel that previously could not support one.

Weight: 5.1 lb. (2.31 kg)

Power : 2.8A @12V DC

PART#	NOTES	PRICE
AF-5700T	12.1" Touch Screen	\$4800

8.4" AF-5500 DISPLAY



The same AF-5000 series features in a smaller package. The AF-5500 touchscreen display features a clear and easy to read airspeed indication with user adjustable color ranges. The altimeter is set using a familiar and convenient adjustment knob. Other flight instrument functions include a slip ball and user-configurable g-meter.

Weight: 4.2 lb. (1.9 kg)

Power : 2.8A @12V DC

PART#	NOTES	PRICE
AF-5500T	8.4" Touch Screen	\$4000

8.4" AF-5400 DISPLAY



The AF-5400 is designed to be a drop-in replacement for existing AF-3500/4500 customers. No need to cut a new panel. It has the same AF-5000 series features as the rest of the line, including a high-resolution touchscreen, interactive Check-Lists, Radio Tuning, Remote Audio Panel, Sectionals, IFR Charts, Remote Mode-S Transponder, Video Input, and more.

PART#	NOTES	PRICE
AF-5400T	8.4" Touch Screen	\$4495

COMPONENTS

VHF COM Radio



Dynon's revolutionary COM radio interface will change the way you fly with dedicated buttons for tuning Tower/CTAF, ATIS/WX, ATC, and Ground frequencies.

Weight: 1.13 lb (0.51 kg)

Power: 0.2A Receive, 2.0A Transmit @12V DC for SV-COM-X83 / X25

MODEL#	NOTES	PRICE
SV-COM-TC25	Horz. & Vert. versions; 25kHz spacing only. TSO'd transceiver.	\$1295
SV-COM-X83	Horz. & Vert. versions; 8.33 kHz spacing. TSO'd transceiver.	\$2195

Autopilot Control Panel



Individual buttons for all autopilot modes let you use your Advanced menus exclusively for other features like navigation and flight planning. Built-in 2-axis speed-sensitive trim controller.

Weight: 0.3 lb. (0.15 kg)

Power: 0.05A @12V DC

MODEL#	NOTES	PRICE
SV-AP-PANEL	AP panel button features require use of autopilot in expert mode.	\$579

Knob Control Panel



Dedicated controls for your barometric altimeter setting and the two bugs you use the most.

Weight: 0.4 lb. (0.18 kg)

Power: 0.07A @12V DC

MODEL#	NOTES	PRICE
SV-KNOB-PANEL	Available in horizontal and vertical versions.	\$295

Two-Place Stereo Intercom



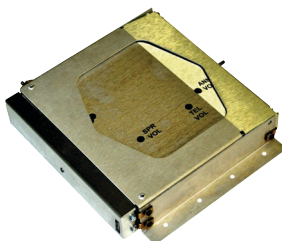
Stereo, two-place intercom with audio connectivity for EFIS alerts and music that is usually only found in full-size audio panels.

Weight: 0.45 lb. (.204 kg)

Power : 0.1A @12V DC

MODEL#	NOTES	PRICE
SV-INTERCOM-2S	Includes horizontal and vertical faceplates, stereo headset jacks.	\$295

EFIS Controlled Remote Audio Panel



A full audio panel without using valuable panel space. Now featuring IntelliAudio® True Dimensional Sound to hear multiple radios simultaneously, spatially separated in your headset. Also includes Enhanced Bluetooth® with music streaming capability. Other features include legendary 4-place hi-fi stereo IntelliVox® intercom with Soft Mute, two stereo music inputs, split mode, and multiple other inputs. Manufactured by PS Engineering for AFS.

MODEL#	NOTES	PRICE
AF-PDA360EX-R	Compatible with AF-5000 series systems only.	\$1,495

ADAHRS - Primary and Secondary



Provides primary flight instruments, including attitude, airspeed, altitude, magnetic heading, DG, VSI, AOA, G-meter, turn rate, slip/skid ball, OAT, and TAS. Add a secondary ADAHRS for redundancy: AFS EFIS systems automatically cross-check your instruments for you. For aircraft where the desired ADAHRS placement would result in interference due to proximity to ferrous metal or power, an optional remote magnetometer is available.

Weight: 0.5 lb. (0.2 kg) for SV-ADAHRS-200/201, 0.46 lb. (0.21 kg) for SV-MAG-236
Power: 0.15A @12V DC

MODEL#	NOTES	PRICE
SV-ADAHRS-200	Primary	\$1350
SV-ADAHRS-201	Secondary / Backup	\$800
SV-MAG-236	Remote magnetometer (optional)	\$150

Engine Monitoring Modules

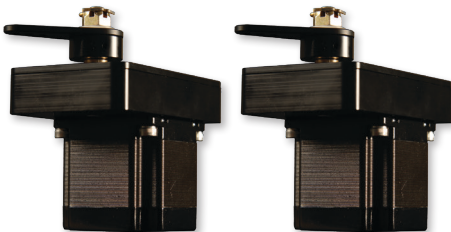


The EMS module receives signals from engine sensors for display on your EFIS. Order the SV-EMS-220 for most engines, SV-EMS-221 for the Rotax 912 iS, 915 iS, TP100, and UL Power. Engine sensor/harness packages for Lycoming/Continental/Jabiru/Rotax engines sold separately. Sensors/harnesses available a-la-carte for other engines.

Weight: 0.63 lb. (0.29 kg)
Power: 0.11A @12V DC

MODEL#	NOTES	PRICE
SV-EMS-220		\$650
SV-EMS-221	For Rotax 912 iS, 915 iS, TP100, and UL Power	\$650
	Probe + Harness packages	\$190-1245

Autopilot Servos

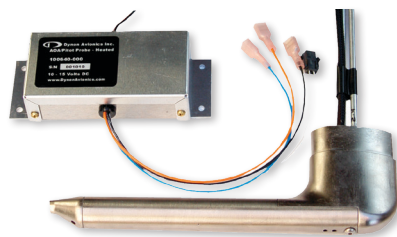


Just add servos to your system to add a fully IFR-capable autopilot. Mounting kits are available for various aircraft. The optional SV-AP-PANEL adds dedicated autopilot controls. It also features a digital, dual-axis trim controller with proportional speed control and autopilot auto-trim.

Weight: 2 lb. (0.9 kg) for SV32, 3 lb. (1.4 kg) for SV42, 4 lb. (1.8 kg) for SV52
Power: 1.3A / 2A / 2.8A @12V DC (at 100% torque)

MODEL#	NOTES	PRICE
SV32/42/52	Autopilot Servos	\$800 each
Various	Servo Mounting Brackets Kits	\$30--\$110

AOA / Pitot Probes

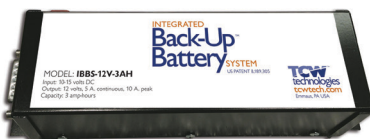


The rest of GA is starting to see the value of AOA as a major safety-enhancing device. Meanwhile, it's been available for all AFS EFIS systems for over a decade. It provides progressive audible approach-to-stall alert.

Weight: 0.35 lb. (0.18 kg) for 100141-000, 0.72 lb. (0.33 kg) for the 100667-000 with controller
Power: 10A @12V DC (at Maximum Heat)

MODEL#	NOTES	PRICE
100141-000	AOA/Pitot Probe, Unheated (Underwing)	\$229
100667-000	AOA/Pitot Probe, Heated w/controller (Underwing)	\$450
100532-000	AOA/Pitot Probe, Unheated (Boom Mount)	\$229

Backup Batteries



An AF-BAT-3AH is designed to backup a single AF-5000 series screen. The AF-BAT-6AH will backup two screens. They each provide an hour of backup power for their supported configuration.

Weight: 0.8 lb. (0.4 kg) - SV-BAT-320
Power: 1.0A @12V DC (while charging)

MODEL#	NOTES	PRICE
AF-BAT-3AH	3 Amp Hour (AFS-5000 series only)	\$230
AF-BAT-6AH	6 Amp Hour (AFS-5000 series only)	\$395

COMPONENTS

Mode-S Transponders with ADS-B Out



Lightweight TSO'd Mode-S Transponder with TIS traffic reception (US only) and 1090ES ADS-B Out. US customers should choose the SV-XPNDR-261 for 2020 ADS-B mandate compliance (requires SV-GPS-2020 or other suitable position source).

Weight: 0.77 lb. (0.35 kg)
Power: 0.4A @12V DC

MODEL#	NOTES	PRICE
SV-XPNDR-261	Class 1, FAA 2020 ADS-B Out	\$2300

Traffic/Weather



The dual band SV-ADSB-472 receives ADS-B traffic via 978 MHz (UAT) and 1090 MHz, and also receives NEXRAD, METARS, TAFS, and other weather information. Unlike portable ADS-B receivers, you get FULL ADS-B and radar traffic when you pair this with our SV-XPNDR-261 and SV-GPS-2020.

Weight: 0.3 lb. (0.12 kg)
Power: 0.05A @12V DC

MODEL#	NOTES	PRICE
SV-ADSB-472		\$795
AF-XM	XM weather and XM radio for AF-5000 series systems only.	\$995

GPS Receiver Module



WAAS-enabled, high-sensitivity GPS receiver/antenna. Provides multiple updates per second for superior mapping and synthetic vision. This module is weatherproof for external mounting.

Weight: 0.44 lb. (0.2 kg) for SV-GPS-250, 0.47 lb. (0.21 kg) for SV-GPS-2020
Power: 0.1A @12V DC

MODEL#	NOTES	PRICE
SV-GPS-2020	US ADS-B Out 2020 compliant when paired with an SV-XPNDR-261 transponder.	\$649
SV-GPS-250	Not recommended for use in US when equipping for 2020 ADS-B Out compliance.	\$249

ARINC 429



Use this interface module for third-party certified IFR navigators like the Avidyne IFD440/540.

Weight: 0.4 lb. (0.18 kg)
Power: 0.1A @12V DC

MODEL#	NOTES	PRICE
SV-ARINC-429	ARINC 429 capability is built in to the Advanced Control Module (ACM). For systems that include an ACM, a separate SV-ARINC-429 module is not needed.	\$475

Wi-Fi Adapter

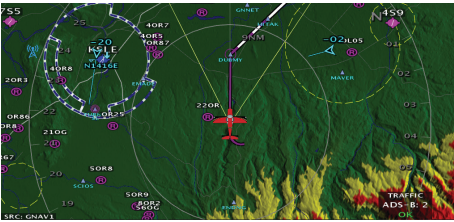


Connect AF-5000 series displays to your mobile devices via the Wi-Fi Adapter, and use apps to flight plan from home and transfer once you're at the aircraft. Compatible with ForeFlight Mobile, PocketFMS EasyVFR, SkyDemon, Ozrunways, and FltPlan Go. Only one adapter per aircraft is used on AF-5000 series systems.

Weight: 0.006 lb. (0.003 kg)
Power: 0.1A @12V DC

MODEL#	NOTES	PRICE
102405-000		\$39

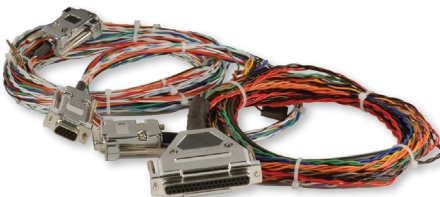
GPS Navigation Mapping



Now included with every display. Pricing for AFS systems are now \$500 less than previous configurations. US aviation data available at no additional charge; non-US aviation data starting at \$119/year from PocketFMS and Jeppesen.

MODEL#	NOTES	PRICE
SV-MAP-270		Included

Harnesses/Network Cables



Prefabricated cables interconnect SV Network components to make sure your installation goes as smoothly as possible. These connect displays, ADAHRS, EMS, ARINC, COM radio, and Knob & AP control panels. Displays also have their own color-coded harnesses available, as do EMS sensor kits.

MODEL#	NOTES	PRICE
SV-NET-XXX		\$45-120
SV-ETHERNET-3CC	For multiple displays	\$29

Video Input Adapter



Display video from any s-video or composite source.

Weight: 0.14 lb. (0.065 kg)
Power: 0.15A @12V DC

MODEL#	NOTES	PRICE
102211-000	Compatible with AF-5000 series only. Not compatible with earlier AFS EFIS systems.	\$198

5-Port Network Hub



Join up to 5 SV Network Cables together, eliminating complicated splicing, with this Network Hub.

Weight: 3.2 oz (0.2 lbs)

MODEL#	NOTES	PRICE
SV-NET-HUB		\$60

Builder Support Products



Advanced and Dynon now manufacture a range of Builder Support Products to help pilots get from "first dream to first flight" as quickly as possible. Examples include an Autopilot Level Button, Dual ADAHRS Mounting Kit, AOA/Pitot/Static Installation Kit, Panel Module Faceplate Blank, Transponder and ADS-B Antennas, and harnesses for Intercom, Transponder, and ADS-B.

SYSTEM WORKSHEET

Description	List Price	AF 5000 SERIES		Yours	Model Numbers
		AFS VFR	AFS IFR		
Primary Flight Display (PFD) and Navigation					
12.1" AF-5800 Display	\$5200				AF-5800T
12.1" AF-5700 Display	\$4800				AF-5700T
10.4" AF-5600 Display	\$4490	\$4490	\$4490		AF-5600T
8.4" AF-5500 Display	\$4000		\$4000		AF-5500T
8.4" AF-5400 Display	\$4495				AF-5400T
Primary Wiring Harness - AFS	\$90	\$138	\$276		53600R3
SV Network Expansion Harness - AFS	\$50	\$50	\$100		53625
ADAHRS - Primary	\$1350	\$1350	\$1350		SV-ADAHRS-200
ADAHRS - Second for Redundancy	\$800		\$800		SV-ADAHRS-201
Remote Magnetometer (optional)	\$150				SV-MAG-236
GPS 5Hz Receiver/Antenna	\$249 *		\$249 *		SV-GPS-250
GPS Navigation Mapping Software (now included with display)	\$0	\$0	\$0		SV-MAP-270
ARINC-429 Interface Module (for IFR GPS interface)	\$475		\$475		SV-ARINC-429
AF Backup Battery: 3 Amp hr. AF Backup Battery: 6 Amp hr.	\$230 \$395	\$230	\$395		AF-BAT-3AH AF-BAT-6AH
Knob Control Panel (Vertical or Horizontal available)	\$295				SV-KNOB-PANEL (V/H)
Video Input Adapter	\$198				102211-000
Wi-Fi Adapter	\$39	\$35	\$35		102405-000
Ethernet Cable – 3' (multiple displays only)	\$25		\$25		SV-ETHERNET-3CC
Network Cables: 6" / 8" / 10" / 1' / 1.5' / 2' / 3' / 6' / 10' / 15' / 20' / 25' / 30'	\$45/45/45/50/60 \$65/65/75/80/85 \$95/105/120	\$60, \$85	\$60, \$60, \$85		SV-NET-XXX
Network Splitter (for installing two ADAHRS)	\$110		\$110		SV-NET-SPL
Network 5 Port Hub (for installing more than two modules)	\$60		\$60		SV-NET-HUB
Configuration Sub-Totals:		\$6,293	\$12,570		

AOA/Pitot Probes					
Pitot Probe, Unheated - underwing	\$229	\$229			100141-000
Pitot Probe, Heated, w/controller - underwing	\$450		\$450		100667-000
Pitot Probe, Unheated - boom mount	\$229				100532-000
Configuration Sub-Totals:		\$229	\$450		

NOTES

Description	List Price	AF 5000 SERIES		Yours	Model Numbers
		AFS VFR	AFS IFR		
Engine Monitoring					
Standard Engine Monitoring Module / Module for Rotax 912 iS, 915 iS, TP100, and UL Power	\$650	\$650	\$650		SV-EMS-220 / 221
3' Network Cable (both end connectors)	\$65	\$65	\$65		SV-NET-3CC
Lyc/Cont/Superior, 4-cyl, Carbureted / Fuel Injected	\$1062 / \$1018	\$1018	\$1018		EMSKIT-L4C / L4F
Lyc/Cont/Superior, 6-cyl, Carbureted / Fuel Injected	\$1245 / \$1205				EMSKIT-L6C / L6F
Rotax 912 / Rotax 912 iS	\$556 / \$310				EMSKIT-RTX / RTX iS
Jabiru 2200 / 3300	\$855 / \$1009				EMSKIT-J22 / J33
Fuel Flow Transducer	\$249	\$249	\$49		100403-003
Configuration Sub-Totals:		\$1,982	\$1,982		

Autopilot					
SV32, SV42, SV52 Servo, Roll and/or Pitch, Regular or Capstan	\$800	\$1600	\$1600		Various
Autopilot Control Panel (Vertical or Horizontal available)	\$579		\$579		SV-AP-PANEL (V/H)
Network Servo Wiring Kit - 20'	\$80	\$160	\$160		SV-NET-SERVO
Network 5 Port Hub (for installing more than two modules)	\$60	\$60	\$60		SV-NET-HUB
Network Cable - with both end connectors, 1.5' or 3'	\$60 or \$65		\$60		SV-NET-1.5CC
Servo Mounting Brackets Kits - Various	\$89-110	\$178	\$178		Various
Generic Servo Connection Kit	\$30				101020-000
Configuration Sub-Totals:		\$1,998	\$2,637		

Transponders, ADS-B In/Out, Traffic and Weather					
Class 1, Mode-S, FAA 2020 ADS-B Out compliant	\$2300	\$2300	\$2300		SV-XPNDR-261
High Integrity GPS for 2020 - ADS-B Out Compliant	\$649	\$649			SV-GPS-2020
ADS-B Dual Band Traffic and Weather	\$795	\$795	\$795		SV-ADSB-472
XM Weather + Radio	\$995				AF-XM
Configuration Sub-Totals:		\$3,744	\$3,095		

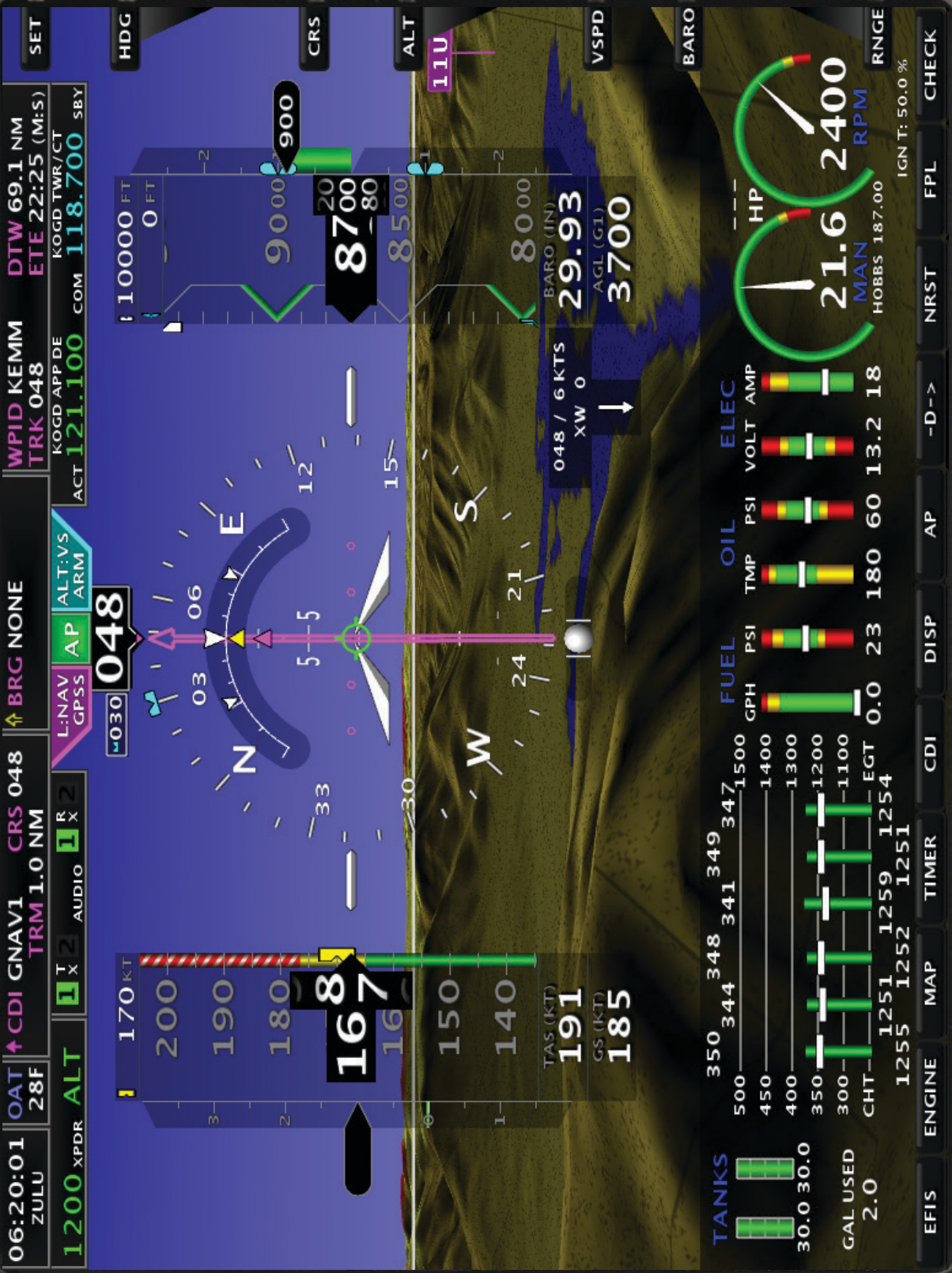
Radios, Intercom and Audio					
VHF COM Radio, 25 kHz (Vertical or Horizontal available)	\$1295	\$1295	\$1295		SV-COM-X25 (V/H)
VHF COM Radio, 8.33 kHz (TSO'd transceiver) (Vertical or Horizontal available)	\$2195				SV-COM-X83 (V/H)
Network Cable - with both end connectors, 1.5' or 3'	\$60 or \$65	\$60	\$60		SV-NET-3CC
2-Place Stereo Intercom (Incl. Vertical & Horizontal faceplates)	\$295	\$295			SV-INTERCOM-2S
EFIS Controlled Remote Audio Panel	\$1495		\$1495		AF-PDA360EX-R
Configuration Sub-Totals:		\$1,650	\$2,850		

* Required if not using SV-GPS-2020

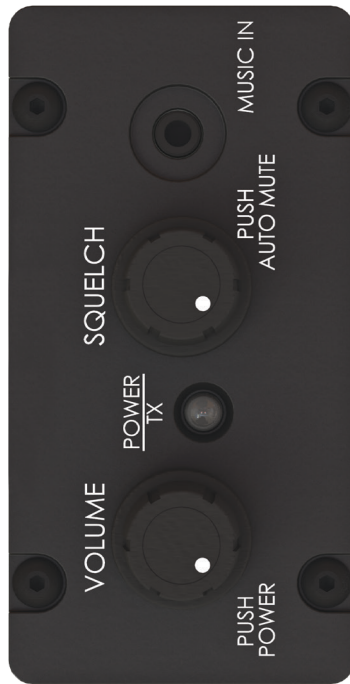
Additional third party products that may be needed: IFR-Certified GPS, Nav Radio, COM Radio Antenna.

ADVANCED deck 5600

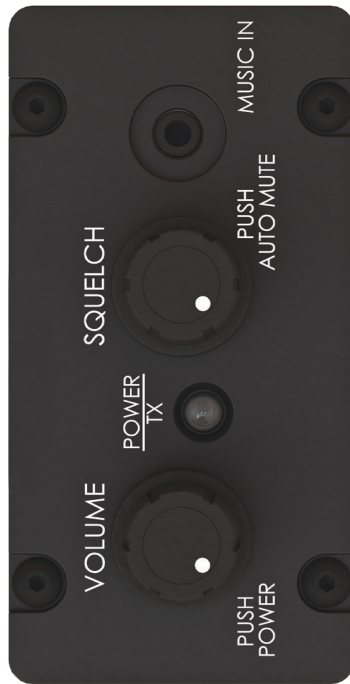
ADVANCED



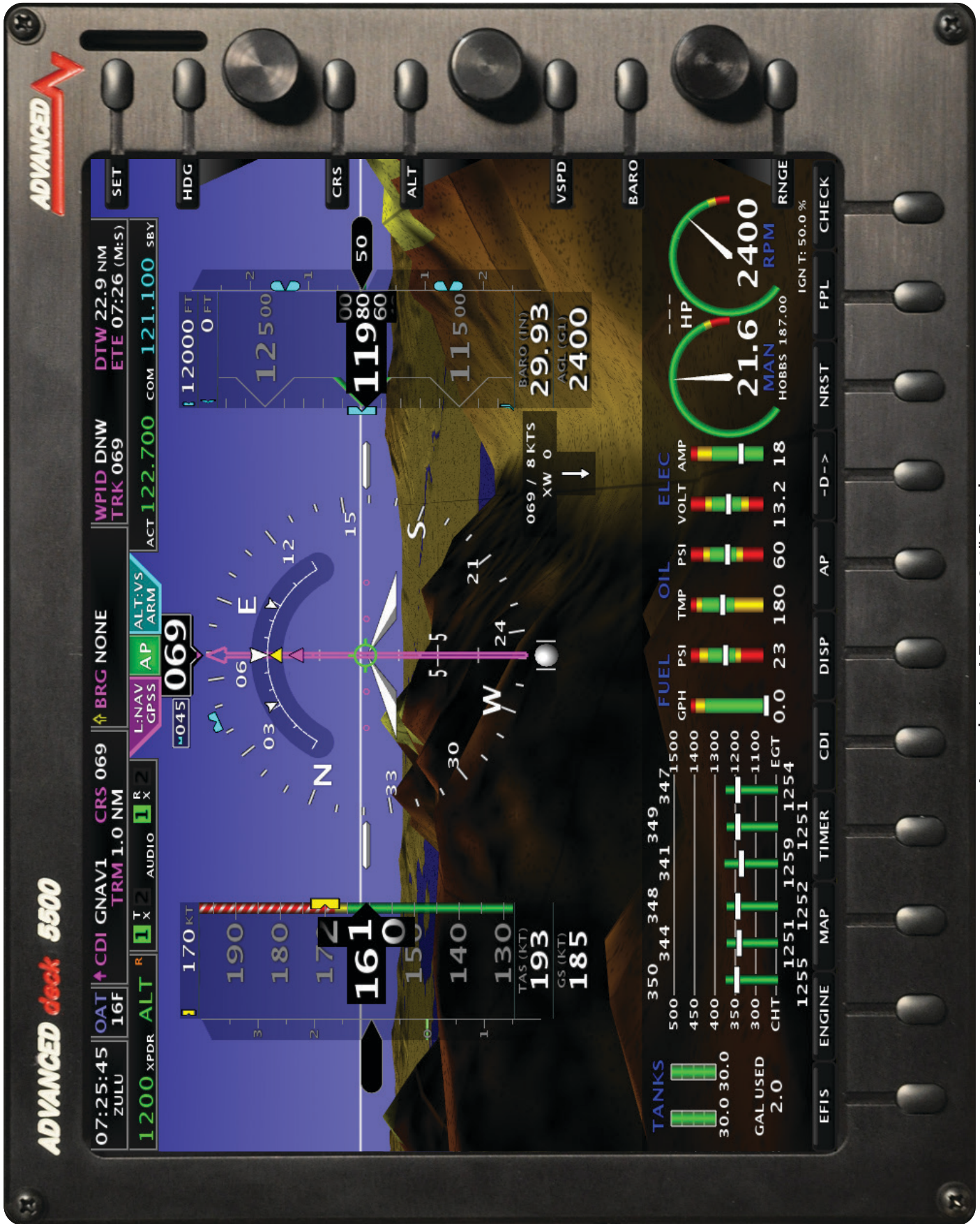
Actual size AF-5600 10.4" Display



Actual Size Control Panels
For planning use only. Do not use as a panel-cutting template.



Actual Size Control Panels
For planning use only. Do not use as a panel-cutting template.



ADVANCED

ADVANCED deck 5500

07:25:45 ZULU OAT 16F CDI GNAV1 TRM 1.0 NM CRS 069 BRG NONE WPID DNW TRK 069 DTW 22.9 NM ETE 07:26 (M:S)

1200 XPDR ALT 1200 GPSS AP 069 L-NAV GPSS ARM ALT-VS ARM ACT 122.700 COM 121.100 SBY

170 KT TAS (KT) 193 GS (KT) 185

12000 FT 11500 FT 11980 FT 12500 FT

069 / 8 KTS XW 0

BARO (IN) 29.93 AGL (GT) 2400

TANKS 30.0 30.0 GAL USED 2.0

FUEL 0.0 23 PSI 180 60 13.2 18

OIL 13.2 18 PSI 180 60 13.2 18

ELEC 18 18 VOLT AMP

HP 21.6 2400 RPM

HOBBS 187.00 IGNT: 50.0 %

SET HDG CRS ALT VSPD BARO

EFIS ENGINE MAP TIMER CDI DISP AP -D-> NRST FPL CHECK

Actual size AF-5500 8.4" Display

For planning use only. Do not use as a panel-cutting template.

ADVANCEDTM

FLIGHT SYSTEMS



A Dynon Company

ADVANCEDFLIGHTSYSTEMS.COM

320 S Redwood St, Canby, OR 97013

(503) 263-0037

